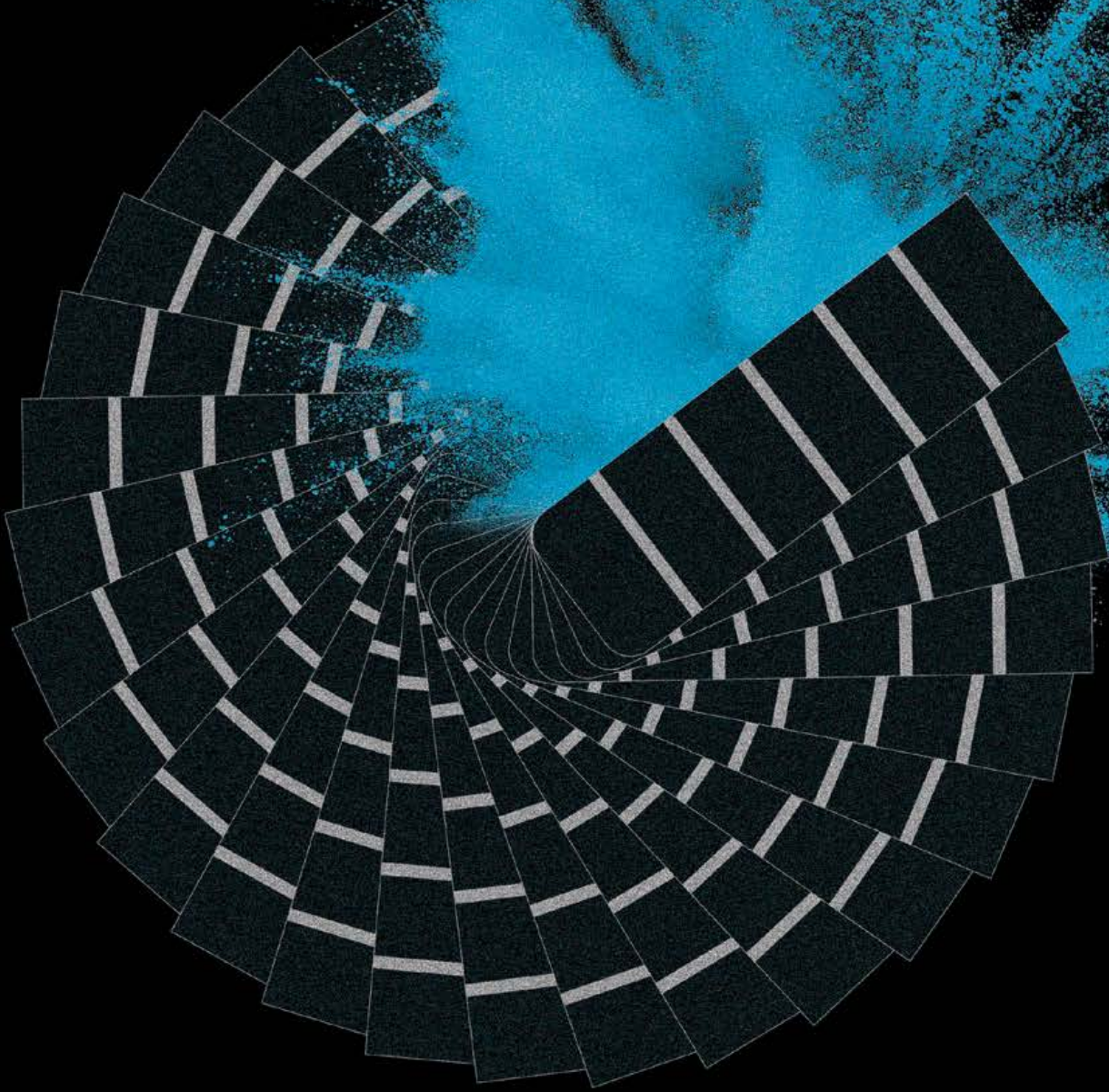




**PROTECH**  
— GROUP —  
POWDER DIVISION



THERMOSET POWDER COATINGS



# STOCK COLOR COLLECTION

# COATINGS THAT HAVE YOU COVERED



The Protech Group offers a comprehensive range of thermoset powder coatings designed to meet the diverse needs of industries worldwide. Our extensive stock color collection includes a broad spectrum of colors, finishes, and textures—from vibrant solids to metallics, and from smooth gloss to textured mattes—providing both aesthetic versatility and superior performance. With multiple distribution sites and 8 global thermoset production facilities, we ensure fast and reliable access to our products around the world. This collection reflects our commitment to quality, innovation, and customer service, making it easier than ever to find the perfect coating solution for any application.

COLORS MAY VARY DUE TO DIFFERENT SCREEN RESOLUTIONS AND CALIBRATION.

# P-SERIES

## POLYESTER TGIC

The P-Series is a versatile line of polyester TGIC-based powder coatings formulated to meet AAMA 2603 standards. These coatings offer an ideal balance of performance, durability, and cost-effectiveness, making them well-suited for a wide range of indoor and outdoor applications. Known for their excellent flexibility, impact resistance, and chemical resistance, P-Series powders are available in 192 RAL colors upon request.



**BLACK - N1**  
PK612N1  
Gloss level: Visual 15  
Velvacoat



**BLACK - N2**  
PT211N2  
Gloss level: Visual 85  
Textured



**MIRROR BLACK - N9**  
PS111N9  
Gloss level: 93 ± 3  
Smooth



**BLACK - N10**  
PX611N10  
Gloss level: 2 ± 1  
Sandtex



**BLACK - N13**  
PS311N13  
Gloss level: 50 ± 5  
Smooth  
.AG (Anti-Gassing)



**SHADOW BLACK - N32**  
PS211N32  
Gloss level: 85 ± 5  
Smooth



**BLACK - N35**  
PS411N35  
Gloss level: 45 ± 5  
Smooth



**BLACK - N64**  
PS512N64  
Gloss level: 30 ± 5  
Smooth



**BLACK - N124**  
PW511N124  
Gloss level: 3 ± 1  
Wrinkle



**BLACK - N221**  
PS442N221  
Gloss level: 50 ± 5  
Smooth  
.AG (Anti-Gassing)



**BLACK - N241**  
PS641N241  
Gloss level: 3 ± 2  
Smooth



**ANCIENT BLACK - N333**  
PS541N333  
Gloss level: 5 ± 2  
Smooth  
.HD (Heavy Duty)

# P-SERIES

## POLYESTER TGIC



### RUSTIC BRONZE - M365

PM341M365  
Gloss level: 55 ± 5  
Metallic



### COPPER ON BLACK - NU2

PV212NU2  
Gloss level: Visual 80  
Vein  
Anti-Tarnish



### CHARCOAL GRAY - A1328

PS221A1328  
Gloss level: 88 ± 3  
Smooth



### METEOR GRAY - A162

PM211A162  
Gloss level: Visual 85  
Metallic



### GRAY - A1162

PS411A1162  
Gloss level: 45 ± 5  
Smooth



### GRAY - A13

PS311A13  
Gloss level: 55 ± 3  
Smooth



### HIGH BUILD GRAY - A190

PS211A190  
Gloss level: 85 ± 2  
Smooth



### STAINLESS - S129

PM212S129  
Gloss level: 80 ± 5  
Metallic



### BLADE SILVER - S3

PK612S3  
Gloss level: 20 ± 2  
Velvacoat



### SPARKLE SILVER - S11

PM211S11  
Gloss level: Visual 85  
Metallic



### BRASSY GOLD - Y58

PM212Y58  
Gloss level: Visual 85  
Metallic



### BEIGE - H30

PT311H30  
Gloss level: Visual 70  
Textured



### MERCURY BLUE - B6

PS211B6  
Gloss level: 90 ± 5  
Smooth



### GREEN - G58

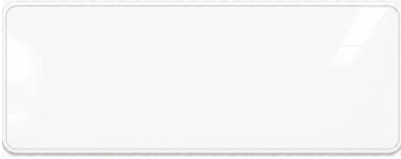
PS211G58  
Gloss level: 81 ± 4  
Smooth



### GREEN - G654

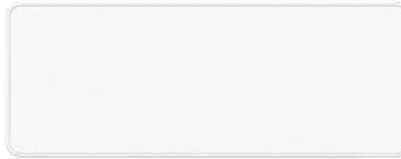
PS412G654  
Gloss level: 45 ± 5  
Smooth

# P-SERIES POLYESTER TGIC



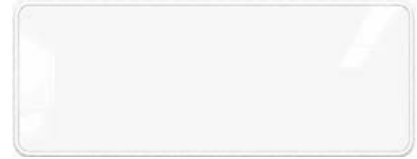
## WHITE - W2

PS111W2  
Gloss level: 90 ± 3  
Smooth



## WHITE - W196

PX612W196  
Gloss level: 5 ± 1  
Sandtex



## WHITE - W460

PS241W460  
Gloss level: 95 ± 5  
Smooth  
.AM (Anti-Microbial)



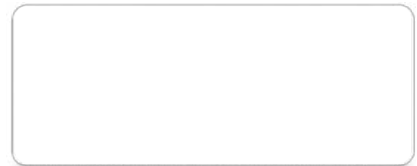
## WHITE - W461

PS141W461  
Gloss level: 95 ± 5  
Smooth



## SIGNAL WHITE - W625

PS312W625  
Gloss level: 65 ± 5  
Smooth  
.FP (Foam in Place)



## COOL WHITE - W718

PS542W718  
Gloss level: 12 ± 2  
Smooth



## REFLECTOR WHITE - W913

PS541W913  
Gloss level: 20 ± 3  
Smooth



## RED - R276

PS122R276  
Gloss level: 95 ± 5  
Smooth



## RED - R158

PS112R158  
Gloss level: 95 ± 5  
Smooth



## YELLOW - Y56

PS211Y56  
Gloss level: 91 ± 2  
Smooth



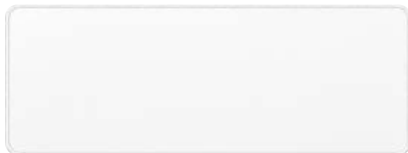
## SAFETY YELLOW - Y13

PS212Y13  
Gloss level: 92 ± 4  
Smooth



## CLEAR - C40

PZ111C40  
Gloss level: 95 ± 5  
Transparent



## CLEAR - C12

PZ512C12  
Gloss level: Visual 25  
Transparent



# H-SERIES HYBRID

Hybrid powder coatings combine the benefits of epoxy and polyester technologies, making them a smart choice for decorative and general-purpose indoor applications. They offer excellent scratch, mar, and abrasion resistance along with customizable hardness and flexibility. They can also be formulated for FDA compliance, corrosion resistance, and exceptional inter-coat adhesion, making the H-Series a versatile option for topcoats and primers alike.



**BLACK - N11**  
HS412N11  
Gloss level: 40 ± 5  
Smooth



**BLACK - N53**  
HX622N53  
Gloss level: 4 ± 1  
Sandtex



**JET BLACK - N234**  
HS512N234  
Gloss level: 30 ± 5  
Smooth



**BLACK - N304**  
HX512N304  
Gloss level: 12 ± 1  
Sandtex



**CHARCOAL - S4**  
HM212AS4  
Gloss level: 105 ± 10  
Metallic



**SILVER ON BLACK - NS1**  
HV312NS1  
Gloss level: Visual 75  
Vein



**IRON GRAY - A592**  
HT512A592  
Gloss level: Visual 25  
Textured



**GRAY - A9**  
HV212A9  
Gloss level: Visual 85  
Vein/Hammertone



**ANSI 61 GRAY - A135**  
HS412A135  
Gloss level: 50 ± 5  
Smooth



**GRAY - A16**  
HS412A16  
Gloss level: 55 ± 5  
Smooth



**SILVER - S1**  
HM212S1  
Gloss level: Visual 85  
Metallic



**SILVER - S153**  
HM412S153  
Gloss level: 40 ± 5  
Metallic

# H-SERIES HYBRID



## **NICKLE - S14**

HM512S14  
Gloss level: Visual 25  
Metallic



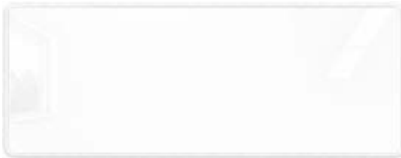
## **SOFT BLUE - B299**

HX511B299  
Gloss level: 10 ± 2  
Sandtex



## **MERCURY BLUE - B11**

HS212B11  
Gloss level: 85 ± 5  
Smooth



## **WHITE - W1**

HS212W1  
Gloss level: 90 ± 5  
Smooth



## **WHITE - W263**

HS212W263  
Gloss level: 80 ± 5  
Smooth  
.FDA (Food Grade) - NFS Certified



## **WHITE - W481**

HX511W481  
Gloss level: 10 ± 2  
Sandtex



## **SAFETY YELLOW - Y12**

HS112Y12  
Gloss level: 90 ± 5  
Smooth



## **RED - R66**

HS212R66  
Gloss level: 80 ± 5  
Smooth



# E-SERIES EPOXY

Protech's E-Series powder coatings are trusted for their smooth finish, strong mechanical performance, and outstanding resistance to corrosion and chemicals. Designed for indoor use or for outdoor applications that are not exposed to direct sunlight, E-Series coatings are a go-to solution for everything from household appliances and office furniture to decorative fixtures.



**BLACK - N49**  
ES542N49  
Gloss level: 20 ± 2  
Smooth



**BLACK - N3**  
ES542N3  
Gloss level: 10 ± 2  
Smooth



**BLACK - N150**  
ES311N150  
Gloss level: 65 ± 5  
Smooth  
.AG (Anti-Gassing)



**BLACK - N189**  
ES612N189  
Gloss level: 4 ± 1  
Smooth



**BLACK - N2**  
ET442N2  
Gloss level: Visual 35  
Textured



**BLACK - N4**  
ES642N4  
Gloss level: 3 ± 2  
Smooth



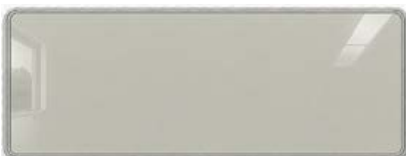
**GRAY - A136**  
ES132A136  
Gloss level: 95 ± 5  
Smooth  
.EF (Functional Epoxy)



**GRAY - A67**  
ES312A67  
Gloss level: 62 ± 4  
Smooth  
Zinc Rich Primer



**GRAY - A151**  
ES412A151  
Gloss level: 45 ± 5  
Smooth  
.EF (Functional Epoxy) - .AG (Anti-Gassing)



**PUTTY GRAY - A156**  
ES321A156  
Gloss level: 70 ± 5  
Smooth  
.EF (Functional Epoxy) - Primer



**GRAY - A26**  
ES412A26  
Gloss level: 50 ± 4  
Smooth  
Primer



**GRAY - A157**  
ES321A157  
Gloss level: 55 ± 5  
Smooth  
.EF (Functional Epoxy) - Primer



**YELLOW - Y43**  
ES112Y43  
Gloss level: 95 ± 5  
Smooth

# Z-SERIES™

## SUPER-DURABLE POLYESTER

Z-Series™ is a line of super-durable powder coatings engineered for long-lasting outdoor performance. Formulated to meet AAMA 2604 and Qualicoat Class II standards, these high-performance coatings are backed by a five-year warranty when properly applied and cured. Ideal for demanding architectural and exterior applications, Z-Series™ powders offer exceptional weather resistance and are available in 192 RAL colors upon request.



### BLACK - N52

ZX611N52  
Gloss level: 7 ± 1  
Sandtex



### EPSILON BLACK - N5

ZT312N5  
Gloss level: 55 ± 5  
Textured  
AG (Anti-Gassing)



### JET BLACK - N88

ZS311N88  
Gloss level: 60 ± 5  
Smooth



### BLACK - N41

ZS341N41  
Gloss level: 60 ± 5  
Smooth



### BROWN - M53

ZS411M53  
Gloss level: 35 ± 5  
Smooth



### FIRE RED - R1

ZS112R1  
Gloss level: 95 ± 5  
Smooth



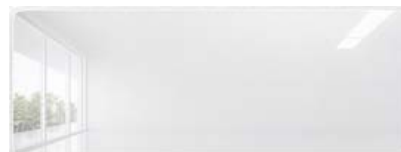
### METALLIC SILVER - S61

ZX611S61  
Gloss level: 9 ± 1  
Sandtex



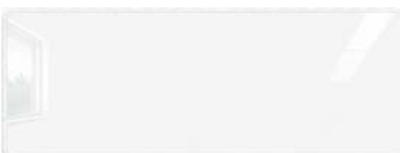
### SIGNAL GRAY - A278

ZX611A278  
Gloss level: 3 ± 2  
Sandtex  
.NS (Anti-Slip)



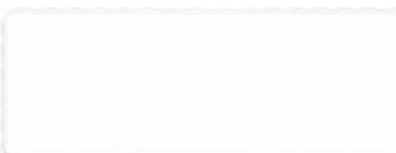
### CLEAR - C3

ZZ111C3  
Gloss level: 100 ± 5  
Transparent  
Low Friction



### FROSTY WHITE - W2

ZS111W2  
Gloss level: 90 ± 5  
Smooth



### WHITE - W12

ZS412W12  
Gloss level: 45 ± 5  
Smooth



# D-SERIES

## POLYESTER TGIC FREE

Protech's D-Series powder coatings offer a durable, high-performance solution for both indoor and outdoor industrial and architectural applications. These decorative polyester powders—also known as Primid or HAA-based—are designed to deliver strong UV resistance, excellent flexibility, and reliable impact performance, and are formulated to meet AAMA 2603 or 2604 standards. Request a fan deck to explore the 192 RAL colors in which D-Series powders are available.



**RED - R18**  
DS212R18  
Gloss level: 85 ± 5  
Smooth



**ORANGE - Q32**  
DS222Q32  
Gloss level: 80 ± 5  
Smooth



**VOLVO YELLOW - Y61**  
DS241Y61  
Gloss level: 80 ± 5  
Smooth  
.SD (Super-Durable)



**COOL GRAY - A72**  
DX612A72  
Gloss level: 11 ± 2  
Sandtex



**VOLVO GRAY - M88**  
DS441M88  
Gloss level: 40 ± 5  
Smooth  
.SD (Super-Durable)

# S-SERIES

## HELIOCOAT®

The Protech Group's heat-resistant HELIOCOAT® is designed to withstand prolonged exposure to high temperatures. Heliocoat® powders provide exceptional color retention and stability, making them ideal for applications such as BBQs, industrial heaters, chimney stacks, engine casings, and engine manifolds.



**BLACK - N25**  
SS541N25  
Gloss level: 15 ± 3  
Smooth  
.T9



**BLACK - N48**  
SM641N48  
Gloss level: 3 ± 2  
Metallic  
.T9



**BLACK - N14**  
SX611N14  
Gloss level: 6 ± 2  
Sandtex  
.T5

# U-SERIES POLYURETHANE

Protech's U-Series polyurethane powder coatings are expertly formulated for outdoor use, offering excellent corrosion resistance, flexibility, and a smooth, high-end finish. With a near-flawless flow (PCI rating 9/10), these coatings are a top choice for premium finishes on automotive parts, architectural elements, outdoor furniture, and appliances.



## BLACK - N1

US411N1

Gloss level: 40 ± 5

Smooth



## BLACK - N6

US511N6

Gloss level: 27 ± 3

Smooth



## BLACK - N18

US511N18

Gloss level: 17 ± 5

Smooth



## BLACK MAGIC - N48

US612N48

Gloss level: 6 ± 1

Smooth

# V-SERIES PERMASLIP®

Permaslip® powder coatings deliver outstanding low-friction performance, minimizing slips, marks, and abrasions in demanding applications. Engineered for durability, they resist chemicals, stains, and scratches, making them an excellent choice for high-wear environments. Solvent-free and environmentally responsible, they also come with a PFOA-free option for added safety and peace of mind.



## BLACK - N1

VT211N1

Gloss level: Visual 85

Textured



## GRAY - A1

VT411A1

Gloss level: Visual 35

Textured

# G-SERIES

## ACRYLIC EXTERIOR

GMA-based acrylic powder coatings are specially designed for niche automotive applications where clarity, durability, and a flawless finish are key. Ideal as clear topcoats on metals like brass, chrome, and aluminum, they offer excellent protection against UV rays, chemicals, and environmental pollutants, preventing fading, yellowing, and corrosion.



### **CLEAR - C22**

GZ112C22

Gloss level: 95 ± 5

Transparent

.EX (Anti-Graffiti)

# M-SERIES\*

## POLYESTER MODIFIED

Modified polyester powder coatings are enhanced blends for interior and exterior applications designed to boost features such as mar and abrasion resistance, chemical durability, and flexibility. By incorporating materials like nylon and silicone, these coatings offer a tough, versatile finish that is ideal for residential, commercial, and industrial applications.



### **YELLOW - Y142**

MS111Y142

Gloss level: 95 ± 5

Smooth



\* For all M Series applications, please refer to the TDS and consult your local sales representative for additional details.

# THERMOSET POWDER CODING SYSTEM

## 1 SYSTEM

- A ACRYLIC
- D POLYESTER TGIC-FREE
- E EPOXY
- G ACRYLIC EXTERIOR
- H HYBRID
- IM CLONECOAT™
- L SOL-AR™
- M POLYESTER MODIFIED
- N NUVOCOAT®
- P POLYESTER TGIC
- S HELIOCOAT®
- U POLYURETHANE
- V PERMASLIP®
- Z Z-SERIES™

## 3 GLOSS

- |   |            |         |
|---|------------|---------|
| 1 | HIGH-GLOSS | 90+     |
| 2 | GLOSS      | 76 - 89 |
| 3 | SEMI-GLOSS | 51 - 75 |
| 4 | SEMI-MATTE | 31 - 50 |
| 5 | MATTE      | 11 - 30 |
| 6 | DULL MATTE | 1 - 10  |

## 5 OVERBAKE RESISTANCE

- 1 VERY GOOD
- 2 GOOD
- 3 FAIR
- 4 POOR

## SPECIAL FEATURE PREFIXES

- .AC ADVANCED CLASSIFIED
- .AG AG-KOTE™ (ANTI-GASSING)
- .AM STERILCOAT® (ANTI-MICROBIAL)
- .BM BONDED METALLIC
- .CC CURVECOAT™ (POST-BENDABLE)
- .EF EF-SERIES™ (FUNCTIONAL EPOXY)
- .EH ENHANCED HARDNESS
- .ESD ESD-KOTE (CONDUCTIVE)
- .EX X-GRAF® (ANTI-GRAFFITI)
- .FDA FOOD GRADE
- .FP FOAM IN PLACE
- .HD HD-KOTE (HEAVY DUTY)
- .NS NON-SLIP
- .PF PFOA FREE
- .SD SUPER-DURABLE (POLYESTER TGIC FREE/ POLYURETHANE)

## 2 FINISH

- D DORMANT
- K VELVACOAT™
- M E-BOND™
- S SMOOTH
- T TEXTURED
- V VEIN
- W WRINKLE
- X SANDTEX
- Z TRANSPARENT

## 4 BAKE

- |   |                |                     |
|---|----------------|---------------------|
| 1 | REGULAR CURE   | 7' @ 204°C (400°F)  |
| 2 | FAST CURE      | 5' @ 204°C (400°F)  |
| 3 | LOW TEMP. CURE | 20' @ 149°C (300°F) |
| 4 | SLOW CURE      | >7' @ 204°C (400°F) |
| 5 | UV CURE        |                     |

## 6 COLOR

- |   |       |   |        |
|---|-------|---|--------|
| A | GRAY  | N | BLACK  |
| B | BLUE  | Q | ORANGE |
| C | CLEAR | R | RED    |
| D | GOLD  | S | SILVER |
| G | GREEN | U | COPPER |
| H | BEIGE | V | VIOLET |
| K | MULTI | W | WHITE  |
| M | BROWN | Y | YELLOW |

## EXAMPLE

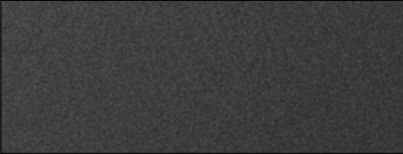
- D 1 - SYSTEM - POLYESTER
- S 2 - FINISH - SMOOTH
- 2 3 - GLOSS - HIGH GLOSS (2)
- 1 4 - CURE - REGULAR CURE
- 1 5 - OVERBAKE RESISTANCE - VERY GOOD
- R 6 - COLOR - RED
- 53 SEQUENTIAL NUMBER

# FINISHES

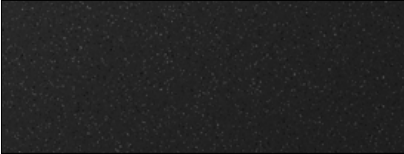
The Protech Group offers an extensive range of finishes to meet every design and performance need. Whether you're looking for a smooth, sleek surface or a bold texture, our finishes deliver exceptional color consistency, protection, and style across a variety of substrates.



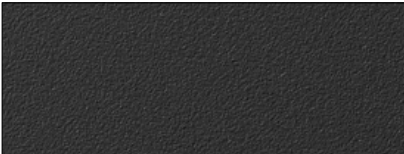
**SMOOTH**



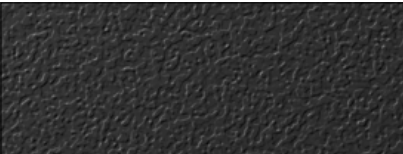
**VELVACOAT™ (SOFT-TOUCH)**



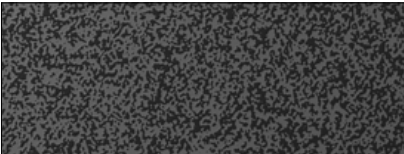
**E-BOND™ (METALLIC)**



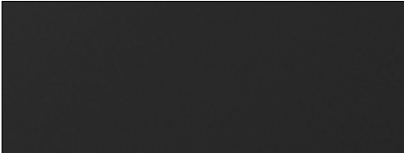
**SANDEX**



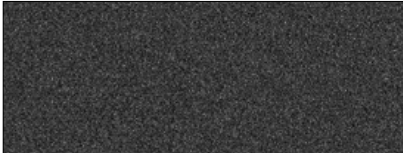
**TEXTURED**



**VEIN / HAMMERTONE**



**TRANSPARENT**

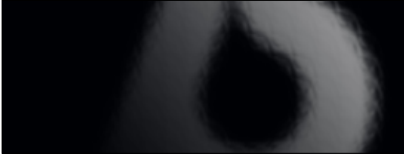


**WRINKLE**

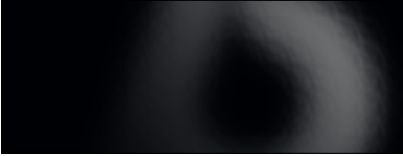


# GLOSS RANGE

The Protech Group offers a complete gloss range to suit any application, from brilliant high-gloss finishes that deliver maximum shine to elegant dull-matte options that provide a smooth, non-reflective look.



1 HIGH-GLOSS 90+



2 GLOSS 76-89



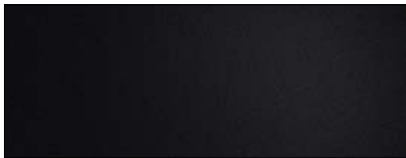
3 SEMI-GLOSS 51-75



4 SEMI-MATTE 31-50



5 MATTE 11-30



6 DULL-MATTE 1-10



# FORMULATING THE RIGHT MIX

Since 1976, The Protech Group has been developing and manufacturing coatings, paints, and specialty materials. Through quality and innovation, we formulate the right mix to protect and enhance what matters most to our customers. Protech Group products are manufactured in more than 20 sites worldwide. We serve our customers in countless markets and industries, including construction, infrastructure, transportation, consumer goods, and healthcare.

PROTECH THERMOSET PRODUCTION SITES CANADA | USA

## MONTREAL

7600 Henri-Bourassa West  
Saint-Laurent, QC, H4S 1W3  
E. [commande.quebec@theprotechgroup.com](mailto:commande.quebec@theprotechgroup.com)  
T. 514 648 4911

## FAIRFIELD

21 Audrey Place  
Fairfield, NJ, 07004  
E. [northeast.order@theprotechgroup.com](mailto:northeast.order@theprotechgroup.com)  
T. 973 276 1292

## NORTH YORK

150 Klondike Drive  
North York, ON, M9L 1X3  
E. [ontario.order@theprotechgroup.com](mailto:ontario.order@theprotechgroup.com)  
T. 416 667 9697

## STRONGSVILLE

22720 Stelfast Parkway  
Strongsville, OH, 44149  
E. [northeast.order@theprotechgroup.com](mailto:northeast.order@theprotechgroup.com)  
T. 440 238 5285

## CALGARY

8009 57 St SE  
Calgary, AB, T2C 5K7  
E. [west.order@theprotechgroup.com](mailto:west.order@theprotechgroup.com)  
T. 578 471 8337

## SPARTANBURG

5680 North Blackstock Road  
Spartanburg, SC, 29303  
E. [southeast.order@theprotechgroup.com](mailto:southeast.order@theprotechgroup.com)  
T. 864 574 7000



[theprotechgroup.com](http://theprotechgroup.com)  
[info@theprotechgroup.com](mailto:info@theprotechgroup.com)  
1 800 361 9364

