

CURVECOAT™

THERMOSET POWDER COATINGS

CURVECOAT™ is the Protech Group's innovative powder coating solution designed specifically for metal parts that require bending or reshaping after application. Engineered to flex without cracking or splitting, CURVECOAT™ enables the efficient coating of larger, unformed components, thereby reducing handling, packaging, and transportation costs. Combining exceptional flexibility with outstanding durability and adhesion, CURVECOAT™ is the ideal choice for manufacturers seeking reliable performance through every stage of fabrication.



PROTECH
— GROUP —

OVERVIEW

Post-Bendable Thermoset Powder Coatings

Post-bendable thermoset powder coatings are engineered for flexibility without compromising durability or appearance. Designed to withstand forming and bending operations after curing, these coatings maintain their integrity, resisting

cracking, flaking, or delamination. Ideal for metal components requiring post-fabrication shaping, they offer excellent adhesion, impact resistance, and a smooth, high-quality finish suitable for both functional and decorative applications.

MAIN FEATURES

- **Post-Forming Flexibility** – Remains intact after bending or reshaping.
- **OT Bend Capable** – Resists cracking even at OT bends.
- **Strong Adhesion** – Bonds tightly to metal, even after forming.
- **Durable Finish** – Resists wear, impact, and weather.
- **Efficient Application** – Enables coating before forming, saving time.
- **Logistics-Friendly** – Coating flat parts simplifies transport and packing.
- **Consistent Appearance** – Retains look and performance after bending.
- **Finish Options** – Available in many colors, textures, and gloss levels.

TYPICAL APPLICATIONS

- **Architectural Panels** – Aluminum curtain walls, façade panels
- **Appliance Housings** – Washing machine frames, oven side panels
- **Automotive Trim** – Car interior trims, metal dashboard parts
- **Lighting Fixtures** – LED housings, lamp brackets
- **Furniture Components** – Office desk frames, modular shelving parts
- **Signage and Display Systems** – Custom retail signs, display racks
- **Electrical Enclosures** – Control panels, junction boxes
- **HVAC Panels & Ducting** – Air return panels, vent covers



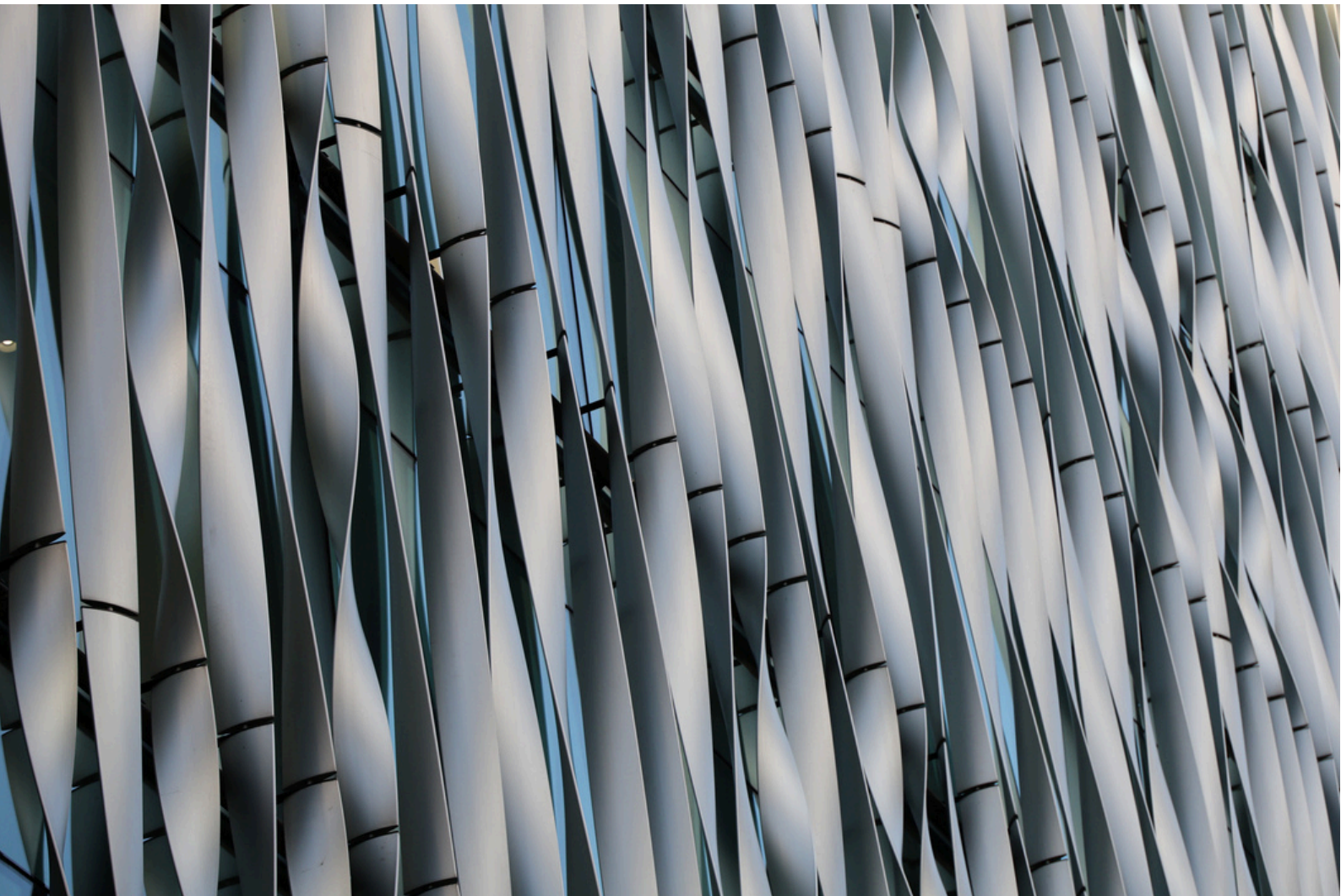
OUR SOLUTIONS

We offer advanced, post-bendable thermoset coatings for a diverse range of applications. If your specific need isn't listed, feel free to contact us—we're here to help.

TECHNICAL PROPERTIES

Essential technical details are outlined below. Full Technical Data Sheet (TDS) available upon request.

PRE-TREATMENT	For steel and Aluminum—Phosphating, Zirconium or other suitable surface treatment
APPLICATION CONDITIONS	Electrostatic powder spray 40 to 100 kv
FILM THICKNESS	For normal usage 1.5 to 4.0 mils (Color and finish type related)
HARDNESS	HB to 4H (Formulation related)
SPECIFIC GRAVITY	1.2 to 1.75 (Color related)
COVERAGE	160 to 110 ft ² / lbs / mil at 100% efficiency (Color related)
BAKING SCHEDULE	METAL TEMPERATURE (Formulation related) 8-10 minutes at 280°F (138°C) Super low temperature cure 8-10 minutes at 320°F (160°C) Low temperature cure 2-6 minutes at 400 (205°C) Fast cure 7 minutes at 400°F (205°C) Regular cure 8+ minutes at 400F (205°C) Slow cure



FORMULATING THE RIGHT MIX.

Since 1976, the Protech Group has been developing and manufacturing coatings, paints, and specialty materials. Through quality and innovation, we formulate the right mix to protect and enhance what matters most to our customers. Protech Group products are manufactured in more than 20 sites worldwide. We serve our customers in countless markets and industries, including construction, infrastructure, transportation, consumer goods, and healthcare.



info@theprotechgroup.com
www.theprotechgroup.com
1-800-361-9364



This document contains general information only and should not be construed as creating any warranties, expressed or implied.
© 2025 Protech Chemicals Inc. All rights reserved.