

# SOL-AR™

## THERMOSET POWDER COATINGS

SOL-AR™ is Protech's premium line of high-performance powder coatings, developed specifically for architectural applications. Engineered for long-term protection and lasting aesthetics, these coatings are formulated with 100% fluoropolymer resin, delivering exceptional weatherability and superior resistance to UV degradation. SOL-AR™ powders also provide outstanding protection against abrasion, corrosion, and surface marring. Unlike liquid or thermoplastic PVDF systems, they offer these advantages without the need for a primer.



**PROTECH**  
— GROUP —

## OVERVIEW

# Fluoropolymer Architectural Powder Coatings.

SOL-AR™ powders are potent, preventing damage during handling and installation, making them ideal for railings and high-traffic areas. They are guaranteed for ten years, meet AAMA 2605-02 specifications, and are available in various colors and gloss levels (5° to 75°). Additionally, they are environmentally friendly and emit no volatile organic compounds (VOCs).

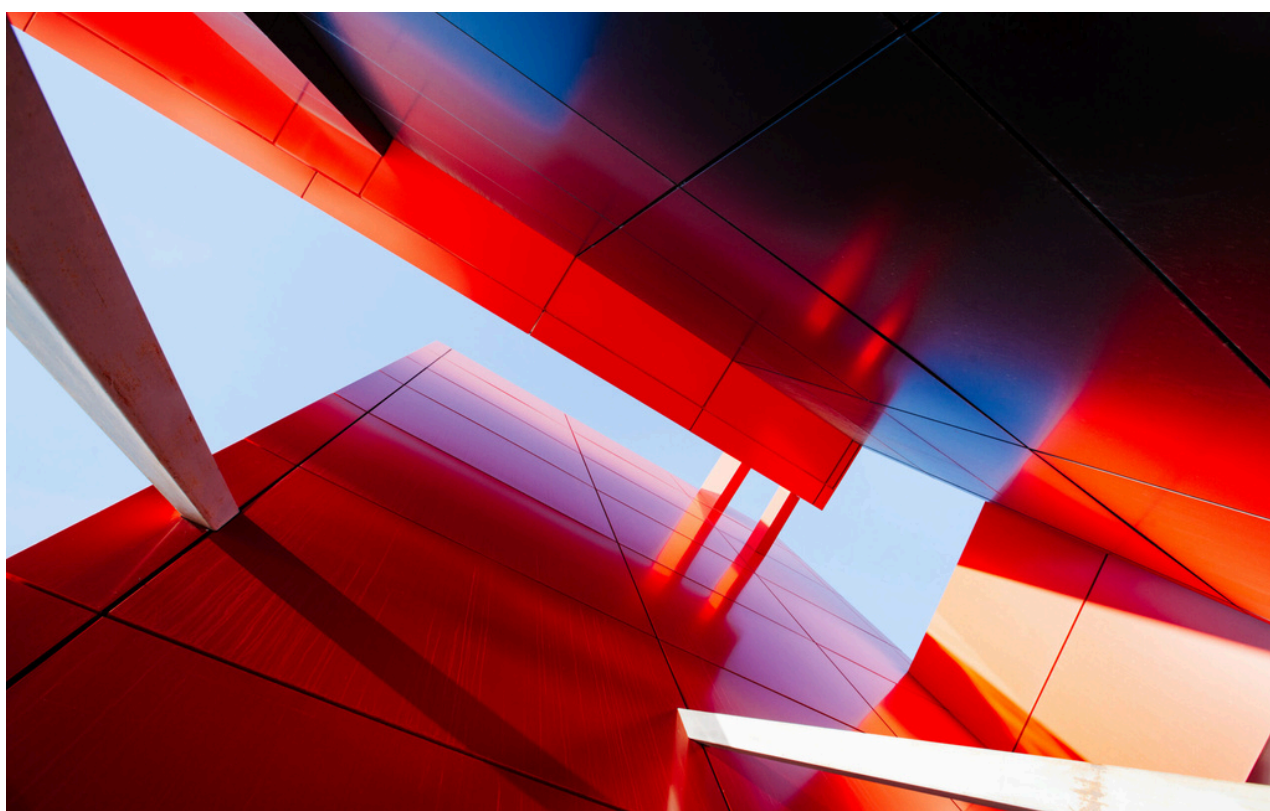
The Protech Group warrants that the SOL-AR™ series of powder coatings produced by the Protech Group or by any of our licensees, will meet or exceed the performance requirements of GSB, Qualicoat, and AAMA 2605 and will maintain film integrity for a minimum of 30 years with normal levels of fading, gloss reduction and chalking.

## MAIN FEATURES

- **Exterior-Grade Protection** for buildings and structures
- **100% Fluoropolymer Resin** for superior corrosion resistance
- **Exceptional Weather & UV Resistance** to prevent fading and degradation
- **Outstanding Durability** against scratches, abrasion, and wear
- **No Primer Required** – direct-to-metal application
- **AAMA 2605-02 Compliant** with a 10-year performance guarantee
- **Eco-Friendly** – VOC-free and low-waste curing
- **Versatile Finishes** – available in a wide range of colors and gloss levels

## TYPICAL APPLICATIONS

- **Curtain Wall Systems:** Aluminum framing for high-rise facades
- **Window & Door Frames:** Architectural aluminum profiles in commercial and residential buildings
- **Exterior Wall Panels & Cladding:** Metal panels on commercial buildings and institutions
- **Railing Systems & Balconies:** Exposed metalwork is subject to weather and wear
- **Architectural Metal Roofs & Flashings:** Steel or aluminum roofing components in harsh environments
- **Canopies, Awnings & Structural Supports:** Outdoor metal frameworks exposed to the elements
- **Commercial Storefront Systems:** Aluminum framing and trim used in retail architecture
- **Public Infrastructure:** Bridges, light poles, transit shelters, and railings
- **Monumental & Landmark Structures:** Buildings and structures demanding premium, long-lasting finishes





## OUR SOLUTIONS

We offer advanced, fluoropolymer architectural thermoset coatings for a diverse range of applications. If your specific need isn't listed, feel free to contact us—we're here to help.

## TECHNICAL PROPERTIES

Essential technical details are outlined below. Full Technical Data Sheet (TDS) available upon request.

FILM THICKNESS	2.5 to 4 mils
STORAGE TEMPERATURE	80°F (27°C)
SPECIFIC GRAVITY	1.2 – 1.7
COVERAGE	115 – 160 sqft/lb/1mil (depending on color)
CURING SCHEDULE	10 minutes at 400°F (204°C) or 15 minutes at 375°F (191°C) (metal temperature)



## FORMULATING THE RIGHT MIX.

Since 1976, the Protech Group has been developing and manufacturing coatings, paints, and specialty materials. Through quality and innovation, we formulate the right mix to protect and enhance what matters most to our customers. Protech Group products are manufactured in more than 20 sites worldwide. We serve our customers in countless markets and industries, including construction, infrastructure, transportation, consumer goods, and healthcare.



info@theprotechgroup.com  
www.theprotechgroup.com  
1-800-361-9364



This document contains general information only and should not be construed as creating any warranties, expressed or implied.  
© 2025 Protech Chemicals Inc. All rights reserved.